

Customer

Spectrum Dynamics Medical

Industry

Medical Tech

Location

Ops Israel

HQ Switzerland

Company size

0-500

Product:

SPECT Imaging Equipment

Solutions:

Service Orders

RMA

Supply Chain Challenges:

On-Time Service Demand

Growing Install Base

RMA

About Spectrum Dynamics Medical

Spectrum Dynamics is a leading company in the global field of nuclear imaging. They develop, sell, manufacture, and support groundbreaking SPECT Imaging devices & Equipment.

When Spectrum Met Unilog...

Spectrum were in the midst of growing their install base and searched for a vendor that can be a reliable partner and align themselves with Spectrum's business goals and provide resources to make their plans a reality.

Spectrum needed a scalable solution that could grow with a rapidly increasing demand for on-time service in many locations worldwide, supporting very sensitive customer sites such as hospitals and medical centers.

Unilog was able to keep up with the Dynamics of Spectrum Dynamics and adjust our services to meet Spectrum's Needs and expectations with the right account management team, and tailor-made top-tier network of WHs and vendors to support Spectrum's service goals.





Unilog gives us the peace of mind we need to focus on our business.

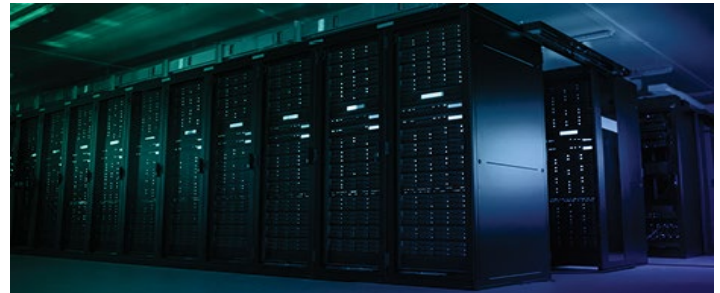


Amir Stadtmauer ,
VP Ops, Spectrum Dynamics Medical

Strategic Supply Chain Design

Unilog operates strategic stock locations and DC's to fulfill Spectrum's service contracts and system install base in Europe, North America & APAC, each WH location, and implementation process was set up carefully and accurately to make sure it meets SLA goals, and quality assurance standards and can offer added value services when needed.

Service disruptions in the medical industry are critical, Unilog operates a wide variety of services and vendors, providing Spectrum the agility they need to respond to any disruptions on time to avoid customer impact.



"Connecting new warehouses to our network with Unilog, was simply easy, every warehouse could follow the same procedures, without any additional IT and implantation resources from our side, Unilog and their team - made it easy for us to grow our supply chain.."

Logivice ,Technology & Instant Implementation

Unilog had set up a full API with Spectrum's ERP System allowing a constant flow of accurate information from our WHs to Spectrum's database, giving Spectrum full visibility of their inventory and every part of their supply chain. Unilog's implementation design allows our customers to open new stock locations and establish identical processes in different parts of the world with little to no effort on our customers' part.

Unilog's Team

aligned itself with Spectrum's vision and standards making their problems our problems, allowing Spectrum to focus on their business and leave the logistics to us.

Our team, is available for any problem our customers face, 24/7/365, we make it our mission to see our customers succeed, and we do everything to make it happen, that's why we are The Right People For The Job.



Results

Accurate

Supply-chain design

Partnership

A long lasting partnership that continues to grow

Agility

Unilog's wide range of services and global partners opens new options for service fulfillment and the ability to respond on time to any crisis

Technology in Action

Logivice allows full visibility of your inventory and supply chain

Commitment

Unilog's team is fully committed to making Spectrum's operations simply work, making sure Spectrum's customers get what they need.



unilog.company

We deliver your pr mises